

The top-left portion of the page features a complex, abstract graphic composed of several thin, black, overlapping lines. These lines form a series of irregular, interconnected shapes that resemble a stylized map or a network diagram. The lines vary in orientation, creating a sense of movement and depth. The overall effect is a modern, minimalist design element.

MCCOY PROPOSED CLOSURE: PARENTS' OBJECTIONS

FEBRUARY 18, 2025

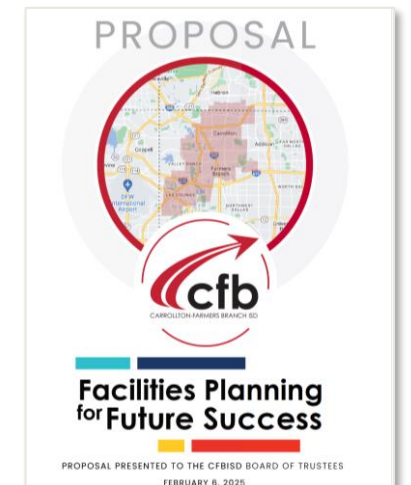
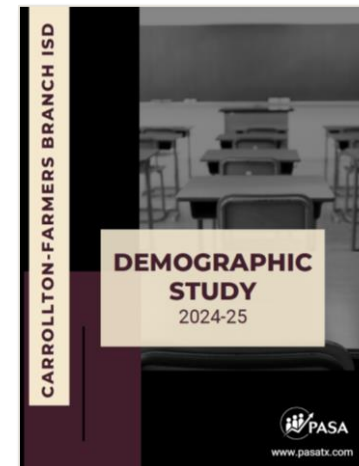


THANK YOU!

Tremendous amount of solid research and study has been conducted to make difficult & complex decisions for the District.

THANK YOU to the Executive Board, the Board of Trustees, Facilities Planning team, Woolpert, and many CFBISD employees.

We appreciate your hard work, your long hours, and your selfless dedication to our children's education!



AGENDA

Insufficient Criteria & Community Notice

Inadequate/Inaccurate Data

Alternative Proposals

Community Actions

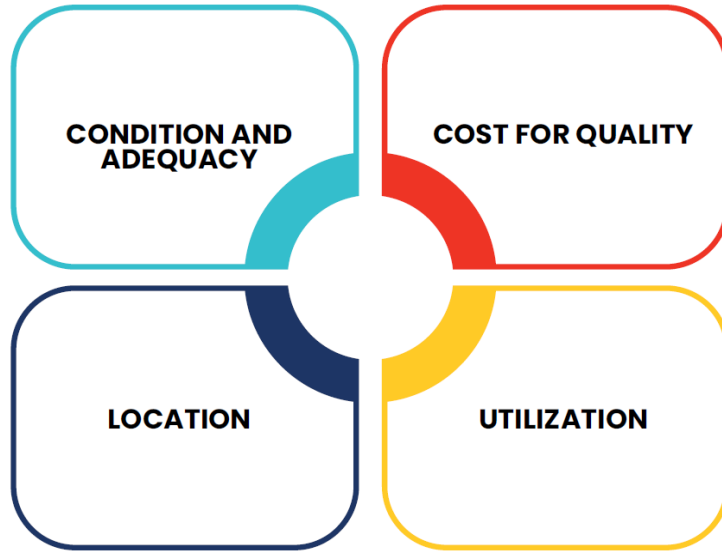


INSUFFICIENT CRITERIA & COMMUNITY NOTICE

INSUFFICIENT CRITERIA – SCHOOL PERFORMANCE

McCoy is the TOP elementary school in CFBISD

Criteria Presented by District



Texas Education Agency (TEA)

Rank	Overall Rating	Student Achievement	School progress	Closing the Gap
1	97	95	94	100

US News

Rank	Score
1	97

GreatSchools.org

Rank	Rating	Academic Progress	Test Score
2	9	10	10

IN DISTRICT RANKING

REGIONAL & STATE RANKING

	# Schools	McCoy Rank	McCoy Rank %	Student Achievement	Campus Performance	Student Growth
North Texas	1021	21	2%	A	A	A
All State	3928	53	1%	A	A	A

INSUFFICIENT CRITERIA – SCHOOL PERFORMANCE

		District	McCoy
STAAR 2023 All grades All Subjects	Approaches Grade Level	76%	92%
	Meets Grade Level	47%	82%
	Masters Grade Level	19%	61%
Attendance Rate		91%	96%

TEA Rankings (out of 24):

Proposed Closure: **McCoy #1**

Proposed Redistribution: **Good #16, Blanton #18, Carrollton #15**

School Name	10yr Change %
Central	-39%
Sheffield ES	-29%
Blair	-25%
Carrollton	-23%
Rainwater	-20%
Davis	-19%
Good	-19%
Rosemeade	-19%
McWhorter	-14%
Blanton	-13%
Farmers Branch	-13%
McLaugh -Strick	-11%
Stark	-10%
Thompson	-10%
Country Place	-6%
Las Colinas	-4%
McCoy	3%
Kent	5%
Freeman	7%
McKamy	7%
Landry	10%
Furneaux	12%
Riverchase	17%
La Villita	24%
AVERAGE	-8%
TOTAL	-10%

District Enrollment is projected to decline overall during the next 10 years.

McCoy is in the minority 1/3 schools to show increased enrollment!

INSUFFICIENT COMMUNITY NOTICE

28 Days – For public comment from public proposal to vote.
District has been working on proposal for 1.5 years

Negatively impacted families have little time to uproot lives.

SCHOOL DISTRICT	FROM VOTE TO NEW SCHOOL YEAR
CARROLLTON - FARMERS BRANCH ISD	5 MONTHS
LEWISVILLE ISD	8 MONTHS
COPPELL ISD	10 MONTHS
PLANO ISD	14 MONTHS



**INADEQUATE/
INACCURATE DATA**

INADEQUATE DATA - UTILIZATION

McCoy is the only majority special need focused school in CFBISD

Utilization % is overgeneralized, not accounting for specialized programs at McCoy.

PASA 60%, Woolpert 66% utilization

# of Classrooms	Type of Class	Max Capacity/ class	Assumed Capacity	Estimated Capacity %
14	Gen Ed	22	308	76%
11	Leap	22	242	67%
4	ABC	10	40	50%

**These specialized programs occupy more than 1/2 of McCoy's classrooms!
Wherever these programs exist, they will always skew the overall utilization of capacity.**

Leap: Students must test into Leap

ABC: Students must need ABC special services.

District controls both enrollments. GenEd can't fill their capacities. These classrooms will always show low utilization

The only fair judgement of McCoy's Utilization of Capacity is GenEd's %

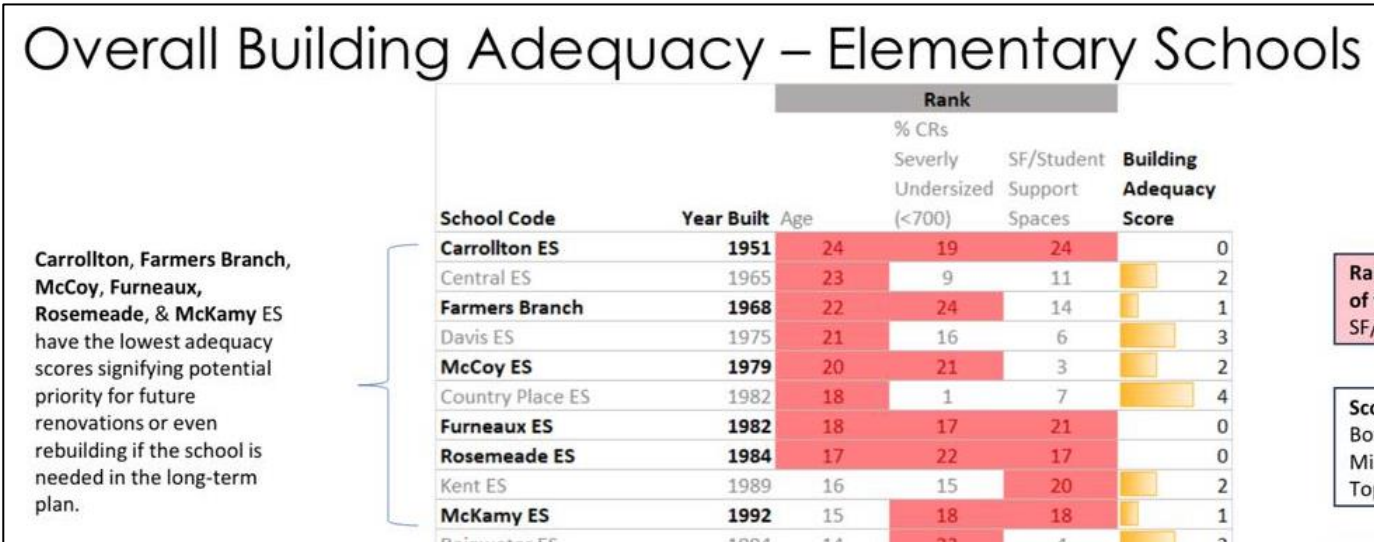
Aside from available Utilization, moving these programs also requires available & dedicated classrooms:

11 for Leap
4 for ABC

Does any school have that many classrooms currently empty? Even with the rezoning plans...

INACCURATE DATA – CONDITION & ADEQUACY

McCoy received a Building Adequacy score of 2 out of 6. Due to its age & % classrooms severely undersized.



% CRs Severly Undersized is not correct. It ranks us in the bottom 1/3.

However, only a total of about 5 classrooms are under 700 sq ft.

So the #s used to calculate % CR need to be validated.

If the #s are incorrect, then our Building Adequacy Score would be 4!

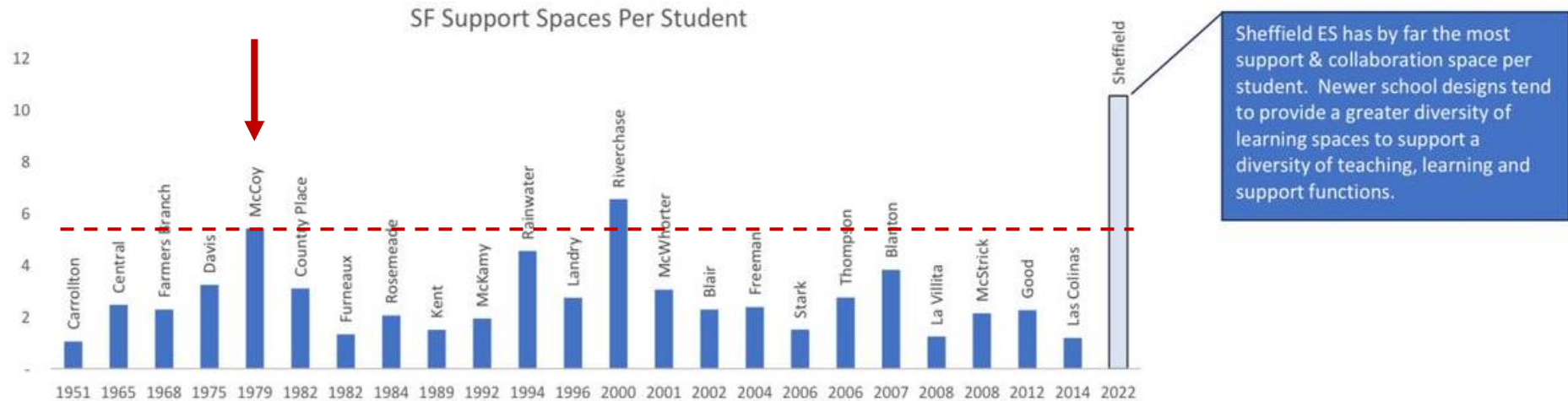
	Age	% CRs Under-utilized	Support Spaces	Building Adequacy Score
Assigned	0	0	2	2
Should be	0	2	2	4

Only 3 out of 24 ESs received a higher than 4 Building Adequacy score!

ACCURATE DATA – CONDITION & ADEQUACY

McCoy is in the top 3 (of 24) schools at Support Spaces!

Analyzing Building Adequacy | Support Spaces



INADEQUATE DATA – LOCATION & COST FOR QUALITY

LOCATION

Negative impact to OoD Transfers.

Convenient central & easy to access location for Out of District Transfers. McCoy has more than double any district's ES OoD Transfers - about 25% of student population. Moving away from McCoy would negatively impact such families and lose students, many of them Leap. Estimated revenue from OoD transfers is \$500K/yr.

COST FOR QUALITY

PRIORITIZATION, LOCATION & ALIGNMENT OF PROGRAMS

Perfect location alignment of Gen Ed & Leap programs.

Many McCoy families have kids in both programs. McCoy being #1 ES in CFBISD & housing Leap in 1 location provides a perfect alignment for these families.

Strong Gen Ed, independent of Leap!

STAAR testing commences in 3rd grade. 3rd grade Leap takes 5th grade math test and 4th grade Leap takes 6th grade math test. So 3rd & 4th grade math test results are purely those of Gen Ed's - **Top in District for 10+ years**

APPROPRIATE STAFFING LEVELS AT SCHOOL

Teachers don't leave McCoy!

Years Experience	% of total
Beginning	7.5%
1-5	18.7%
6-10	18.7%
11-20	36.4%
21-30	15.6%
30+	3.1%

SCORECARD COMPARISONS: EXAMPLE

Using District scoring data + Rankings

							Rankings			
Feeder	City	Building Adequacy	Building Age	Utilization	High Density?	TEA (1-24)	GreatSch (1-24)	Top NTX %	Top State %	
McCoy	Smith	Carrollton	2	46	66%	Y	1	2	2%	1%
Central	Turner	Carrollton	0	59	57%	Y/N	20	21	82%	83%
Furneaux	Creekview	Carrollton	2	43	75%	Y/N	19	17		
Farmers Branch	Turner	Farmers Branch	1	57	55%	Y	8	16	80%	80%
McKamy	Smith	Dallas	1	33	85%	Y	21	20	92%	93%
Rosemeade	Creekview	Carrollton	0	41	58%	Y	4	4	21%	18%
Rainwater	Creekview	Carrollton	3	31	60%	Y	10	6	27%	26%



**ALTERNATIVE
PROPOSALS
&
COMMUNITY
ACTIONS**

ALTERNATIVE PROPOSALS

As building age remains a key factor:

- **Use bond funds earmarked for rebuilding Central to rebuild McCoy.** *Carrollton, Central, Farmers Branch & a new campus for Mary Grimes & B. Salazar were recommended with \$200M-replacement budget.*
- **Finish planned renovations with allocated 2023 bond.** *\$4.1M remaining bond to McCoy, Blanton & Smith as of 8/31/24.*
- **Apply for Education grants to further renovate until 2028 bond.**

Bring 2-3 PreK classrooms to McCoy by repurposing 3-4 classrooms. Estimated revenue of up to \$250K/yr. *It's a parents' dream to send their child to a PreK of #1 rated ES and pay half the Private PreK tuition!*

Accept more Transfer applications, further increasing Gen Ed Utilization of Capacity.

Increase Leap eligibility window for higher utilization of Leap classrooms.

Increase the ISD tax rate to be competitive with surrounding districts. CFBISD's tax rate is lower than 91% of DFW school districts. Tax rate decreased, homestead exemption increased, both resulting in \$41.4M property tax decrease in 2024.

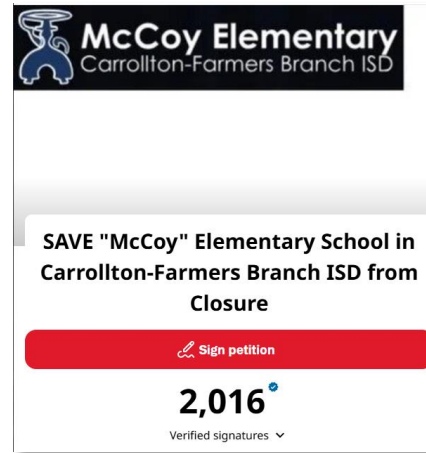
Lease vacant buildings on Frankfort Rd in Carrollton & on Amber Ln in Farmers Branch/Carrollton.

COMMUNITY ACTIONS

The McCoy community is prepared to support our school

We have heard the arguments presented for the closure of McCoy and find them insufficient.

We believe it is the best interest of the community, the district, and the city to **Save McCoy**. To that end, the McCoy community has prepared several actions to support this position.



McCoy Elementary
Carrollton-Farmers Branch ISD

SAVE "McCoy" Elementary School in Carrollton-Farmers Branch ISD from Closure

Sign petition

2,016⁺
Verified signatures

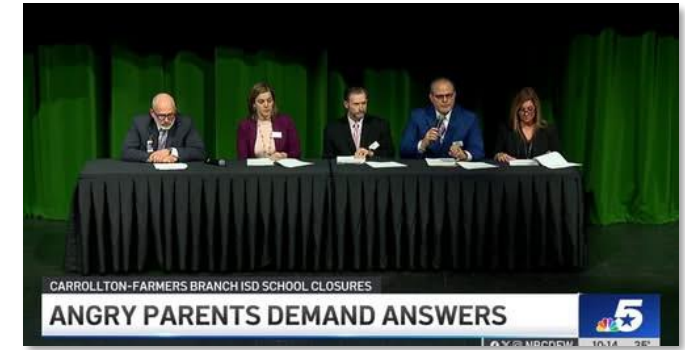
Community Advocacy

2025 Candidates

- [Candidate Eligibility](#)
- There will be three Board of Trustees positions up for re-election

CANDIDATE	APPLICATION
Ileana Garza-Rojas	View Application
Kim Brady	View Application
Tara Hrbacek	View Application
Nicole Yarbrough	View Application
Paul Gilmore	View Application
Andrew Baldwin	View Application
Brady Barnett	View Application
Rangoli Mathur	View Application

CFBISD Board Interests



Media Outreach



City of Carrollton




Legal Action

#SAVEMCCOY

McCoy is:

- An *irreplaceable, long-term* asset to CFBISD
- The top performer in the district
- A revenue generator (OoD)
- A school with strong enrollment
- A family with talented & long-serving teachers and staff



“McCoy is not a lego piece that you can pick up and move and still get the same results. It is an ecosystem.”

-McCoy parent